

# ReadyNAS Duo Setup Manual



## **NETGEAR®**

**NETGEAR, Inc.**  
4500 Great America Parkway  
Santa Clara, CA 95054 USA

February 2008  
208-10215-01  
v1.0

© 2008 by NETGEAR, Inc. All rights reserved.

## **Trademarks**

NETGEAR, the NETGEAR logo, ReadyNAS, X-RAID, FrontView, RAIDar, RAIDiator, Network Storage Processor, and NSP are trademarks or registered trademarks of NETGEAR, Inc. Microsoft, Windows, and Windows NT are registered trademarks of Microsoft Corporation. Other brand and product names are registered trademarks or trademarks of their respective holders.

## **Statement of Conditions**

In the interest of improving internal design, operational function, and/or reliability, NETGEAR reserves the right to make changes to the products described in this document without notice.

NETGEAR does not assume any liability that may occur due to the use or application of the product(s) or circuit layout(s) described herein.

## **Copyright Information**

It is forbidden by law to view, copy, broadcast, use, show or share copyrighted material without the express permission of the copyright owner. You are solely responsible to obtain the appropriate permission or license necessary for any copyrighted materials accessed or used with this device.

## **Hard Drive Disclaimer**

Adding or using your own hard drive(s) is an option with this NETGEAR product. Please refer to the NETGEAR ReadyNAS hard drive compatibility list for qualified drives when selecting and installing your own hard drive(s). This NETGEAR product is not data redundant with a single disk drive. By using this NETGEAR product, you understand and agree that (i) NETGEAR does not warrant any disk drive not provided or installed by NETGEAR; and (ii) NETGEAR is not responsible and you hereby release NETGEAR from any liability under any circumstances whatsoever for any damage to, loss of data or loss of contents of any hard drive use with this NETGEAR product, regardless of whether such hard drive is provided by NETGEAR or qualified to be compatible with this product. In no event will NETGEAR's liability with respect to a failed disk drive or failed product exceed the cost of a replacement disk drive or replacement product, as applicable. In certain circumstances data loss may be permanent and unrecoverable and therefore you are highly encouraged to separately maintain a backup copy of any data that you store on the hard drive(s) used with this NETGEAR product.

# Contents

## ReadyNAS Duo Setup Manual

### Preparing Your ReadyNAS Duo

Installing RAIDar on Windows .....	1
Installing RAIDar on Linux .....	1
Installing the RAIDar Widget on Mac OS X .....	2
Detecting and Accessing Your ReadyNAS Device .....	2
Using the RAIDar Utility on Windows and Linux .....	2
Using the RAIDar Widget on the Mac OS X .....	4
Using the ReadyNAS Duo IP Address .....	6
Copying Files From Your PC to Your ReadyNAS Duo .....	7

### Using the Setup Wizard

Setting the Clock .....	13
Configuring Alert Contacts .....	14
Configuring Your Network .....	16
Ethernet Settings .....	16
Global Settings .....	16
Setting Up Your Password .....	17
Adding User Accounts .....	18
Setting Up File Sharing Services .....	19
Standard File Protocols .....	19
Streaming Services .....	20
Configuring Installed Add-Ons .....	21
Setting up Shares (or Folders) .....	22
Share List .....	22
Adding Shares .....	24
Setting Up Printers .....	25
Registering Your Product .....	26



# Preparing Your ReadyNAS Duo

This Setup Manual provides instructions for connecting the ReadyNAS Duo to your network (“Installing RAIDar on Windows” and “Installing the RAIDar Widget on Mac OS X” on page 2) and methods for detecting your shares and configuring your ReadyNAS Duo (see “Detecting and Accessing Your ReadyNAS Device” on page 2 and “Using the Setup Wizard” on page 11).

Before installing the RAIDar Utility, please note that:

- RAIDar and RAIDar Widget for Mac are utilities used for discovering the ReadyNAS device on your network. They are located on the ReadyNAS *Resource CD*. The RAIDar utilities are useful in environments where the ReadyNAS Duo obtains a random DHCP IP address.
- RAIDar runs on Microsoft Windows and Linux and takes up approximately 40MB of disk space after installation. The RAIDar Widget for Mac runs on Mac OS X and takes up approximately 500 K of space.
- Your client system must reside on the same IP address subnet.



It is forbidden by law to view, copy, broadcast, use, show or share copyrighted material without the express permission of the copyright owner. You are solely responsible to obtain the appropriate permission or license necessary for any copyrighted materials accessed or used with this device.

## Installing RAIDar on Windows

Load the *Resource CD*. Follow the installation wizard to install RAIDar for Microsoft Windows. (If the Autorun installation utility does not start automatically, double-click *Autorun.exe* to start the installation.)

## Installing RAIDar on Linux

Log in as root. Load the *Resource CD*, open the Linux RAIDar setup folder, and double-click on *Setup\_Linux.sh* to start the installation.

If you have problems running RAIDar under Linux:

- To discover the IP address of ReadyNAS, open a terminal session and type **nmblookup -R VOLUME**. If you have a ReadyNAS with an LCD (such as the ReadyNAS NV+), press the power button once to display the IP address.
- To connect to the FrontView Setup Wizard, open a browser, and use the returned IP address to enter **http://<ipaddr>/admin**. Then, go to Step 2 in “[Detecting and Accessing Your ReadyNAS Device](#)” on page 2.
- If you already have an existing workgroup or domain in your environment, ReadyNAS will try to locate that name. If **VOLUME** does not work, try using the workgroup/domain name used on your network in the **nmblookup** command.

## Installing the RAIDar Widget on Mac OS X

To install the RAIDar Widget on the Mac Dashboard:

1. Load the *Resource CD*. Scan the CD contents to locate the Mac folder. When you open the Mac folder, double-click on the *RAIDar1.0.wdgt.zip* to start the installation.



**Figure 1**

2. Follow the screen prompts, **Do you want to Install Widget “RAIDar” and open it in Dashboard**, and click **Install**.
3. When installation is complete, the RAIDar Widget image will display. Click **Keep** to confirm installation of the widget on the Dashboard.

## Detecting and Accessing Your ReadyNAS Device

There are several methods for detecting your ReadyNAS Duo device. You can use the RAIDar utility, or you can detect your ReadyNAS Duo by accessing your router and pasting the ReadyNAS Duo IP Address into your browser.

### Using the RAIDar Utility on Windows and Linux

Before using the RAIDar utility to detect your device, power on ReadyNAS and wait for it to boot up (approximately 2 minutes).

To detect your ReadyNAS Duo device using RAIDar:

1. Open RAIDar by clicking the RAIDar icon  on your desktop. The RAIDar utility will scan your network to locate all connected ReadyNAS devices.



Figure 2

Your ReadyNAS Duo device will be detected when the device has successfully booted and has started a network connection. If you have multiple ReadyNAS devices on your network, match the MAC Address of the system to the address listed on the back of your ReadyNAS Duo device.

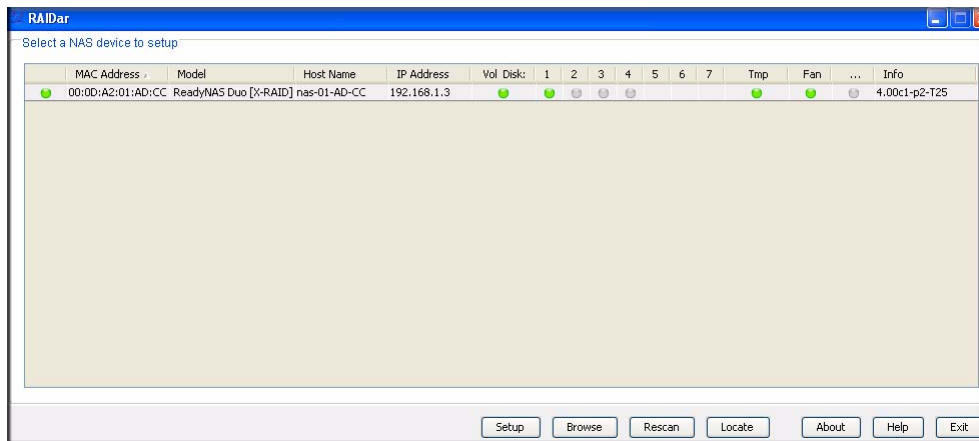


Figure 3

2. Select the device and click **Browse** to access the default shares called **backup** and **media**. The **backup** share can be used as a repository for your data and to backup your data.

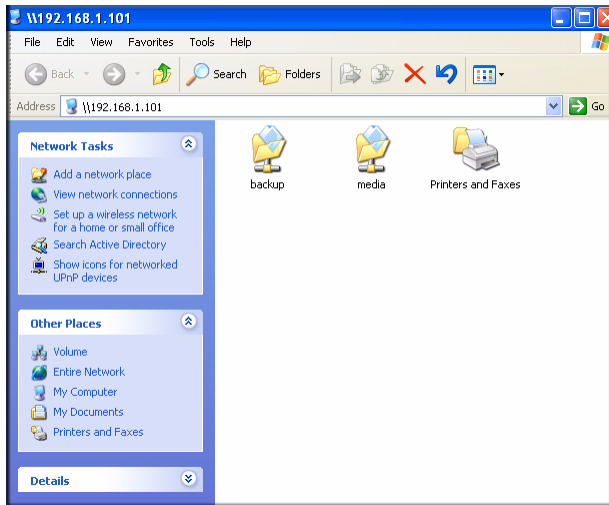


Figure 4

## Using the RAIDar Widget on the Mac OS X

Before using the RAIDar Widget utility to detect your device, power on ReadyNAS and wait for it to boot up (approximately 2 minutes).

To detect your ReadyNAS Duo device using the Mac RAIDar Widget:

1. Press F12 on your keyboard. The Mac Widget Dashboard will display.



Figure 5

As you view the Widget Dashboard, roll over the different elements on the Dashboard to display statistics. For example, if you roll over the drive bays, statistics will display for that drive.

2. Click the **ReadyNAS Duo** image. Your ReadyNAS Duo device will be detected when the device has successfully booted and has started a network connection. If you have multiple



ReadyNAS devices on your network, match the MAC Address of the system to the address listed on the back of your ReadyNAS Duo device.

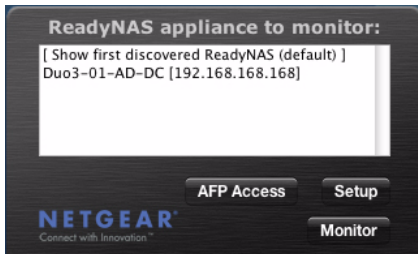


Figure 6

3. Select the ReadyNAS Duo device and click **AFP Access** to access the default shares called **backup** and **media**. The Connect to Server screen displays. Select the **Guest** radio box and click **Connect**.

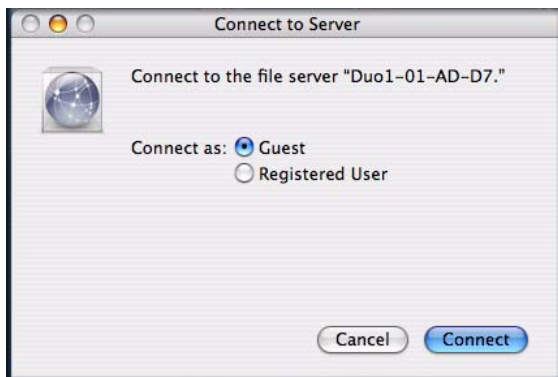
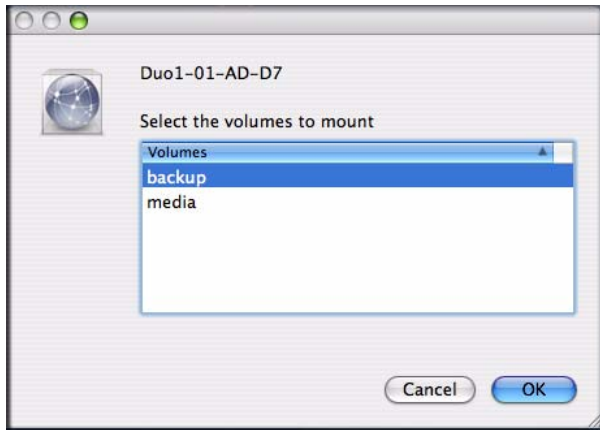


Figure 7

4. The Volume workgroup displays containing the **backup** and **media** share folders. The **backup** share can be used as a repository for your data and to backup your data. The **media** share contains three additional folders for your **Music**, **Pictures** and **Video**.



**Figure 8**

## Using the ReadyNAS Duo IP Address

When your ReadyNAS Duo is connected to your network through your router, your router stores, and can display, the IP address of the ReadyNAS Duo. (Your router will also display the IP addresses of all other devices connected to it.)

To access the IP address of your ReadyNAS Duo:

1. Open a browser window using Explorer, Firefox or Safari:
2. In your browser address field, enter the IP address of your router. In this example, the default IP address for the router is shown below.



**Figure 9**

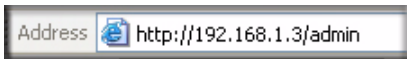
3. Browse through your router menu and locate the screen that shows your router's attached devices. You should see a screen similar to the one below.

#	IP Address	Device Name	MAC Address
1	192.168.1.2	9300UNJT3	00:11:43:71:C8:D8
2	192.168.1.3	NAS-01-AD-CC	00:0D:A2:01:AD:CC

Refresh

**Figure 10**

4. Copy the IP address of the ReadyNAS Duo and enter it into your browser address field and append it with **/admin**, as shown below.



**Figure 11**

5. Click **Enter**. The ReadyNAS Duo login window displays. You will be prompted for your User Name and Password. The default user name is **admin** and the password is **netgear1**.



**Figure 12**

See the [“Using the Setup Wizard” on page 11](#) to continue configuration of the ReadyNAS Duo Setup Wizard.

## Copying Files From Your PC to Your ReadyNAS Duo

The easiest and most reliable method to access your share folders is to use the RAIDar utility (see [“Using the RAIDar Utility on Windows and Linux” on page 2](#)). When RAIDar is installed, you need only open the RAIDar utility by clicking the icon on your desktop (Windows) or by pressing F5 to open the Dashboard (Mac OS X). Once RAIDar is open, select your NAS device and click **Browse** (Windows) or **AFP Access** (Mac OS X). Your share folders will display, similar to the screen shown in [Figure 4 on page 4](#) (Windows) or [Figure 8 on page 6](#) (Mac OS X).

The folder structure in the ReadyNAS Duo includes a Backup folder, a Media folder containing three sub-folders (Music, Pictures and Videos), and a Printer/Fax folder (Windows only).

To verify that you can copy files to and from your new ReadyNAS Duo drive:

1. Open the RAIDar utility. Select the ReadyNAS Duo and click **Browse** (Windows) or **AFS Access** (Mac OS X). The ReadyNAS Duo share folders display. (No password is required.)
2. From your computer, select a file and either drag it to one of the folders on the ReadyNAS Duo drive or right-click (Windows) or control-click (Mac OS X).
3. Choose **Copy** from the context menu and then **Paste** the file into one of the folders.

As an option, on simple networks, you can also browse your network neighborhood to access your Share folders. Your ReadyNAS Duo is identified by “nas-” plus the last 6 digits of its unique MAC address—which is the same name as the Host name. The MAC address of your ReadyNAS Duo is printed on the label on the bottom of the unit.

To access your Share folders on Windows OS:

1. Select Start > Explore.
2. Scroll down to “My Network Places”. Click **My Network Places > Entire Network > Microsoft Windows Network**. The **Volume** workgroup displays. (Volume is the default workgroup name.)
3. Open the **Volume** network to access your share folders.

To access your Share folders on Windows Vista:

1. Select Start > Explore.
2. Scroll down to “Network” and click **Network**. The Network workgroup will open and display all of the items on your network.
3. Select the ReadyNAS Duo to access your share folders. The ReadyNAS Duo is identified by “NAS-” plus the last six digits of its MAC address.



On Windows Vista, the ReadyNAS Duo icon also displays when **Network** is selected. You can then access the ReadyNAS Duo Setup Screen (Advanced Features and Setup Wizard) without using RAIDar.

To access you Share folders on Mac OS X:

1. Select Finder Go > Network.
2. Select the My Network folder to display the ReadyNAS Duo host name.
3. Click the icon for the ReadyNAS Duo you want to access. When the **Connect to Server** screen displays, select the **Guest** radio box and click **OK**. Your share folders will display.



See the *ReadyNAS Duo User Guide* for more specifics on using this method to access your share folders for Microsoft Windows and for the Mac OS X.



# Using the Setup Wizard

Most options in the Setup Wizard are pre-selected to fit most typical environments. It is highly recommended that you go through the wizard if this is your first ReadyNAS Duo installation. For information on using the Advanced Control mode, see the *ReadyNAS User Guide* (a link to the online manual, is on your *Resource CD*).

In a typical Setup Wizard process, you will set the clock, set up alert notification contacts, configure networking, change the default administrator password, and create shares.

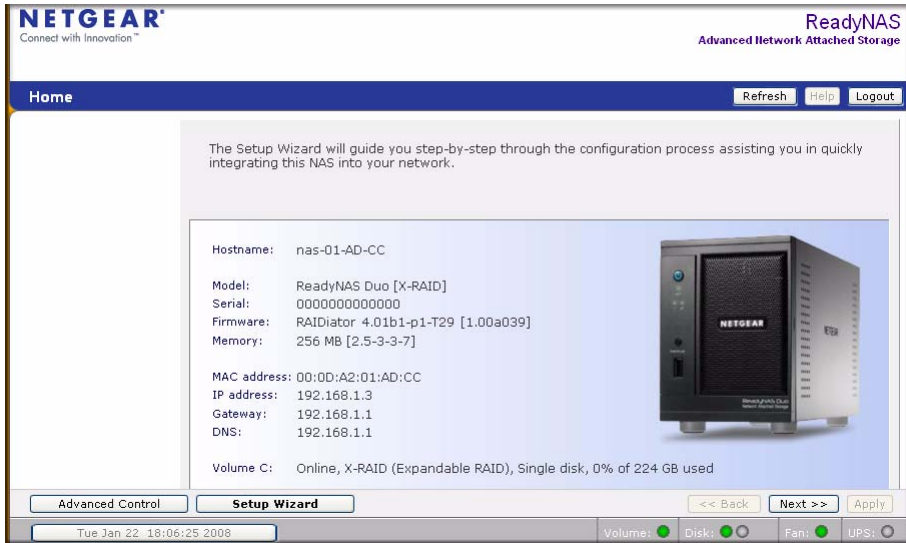
To connect to the Setup Wizard:

1. Click **Setup** in RAIDar (or paste the ReadyNAS Duo IP address in your browser window). If the Security Alert screen displays, click **Continue to this website** or **OK**.
2. The login screen displays. You will be prompted to enter your User Name and Password. The default user name is **admin** and the password is **netgear1**.



**Figure 13**

3. Click **OK**. The ReadyNAS **Setup Wizard** screen displays.



**Figure 14**

As you traverse through the setup screens, you will notice the command bar in the upper right corner and the navigation and status bar at the bottom.

The command bar typically provides options to refresh the browser window, display help (if available), and log out, as shown below.



**Figure 15**

Use the navigation bar to browse through the wizard. Be aware of the following conventions:

- Click **Next** to accept any changes made in the current window and to apply these changes.
- If a screen has an **Apply** button, click **Apply** to save your changes before clicking **Next**. If a screen has multiple tabs, clicking Next will allow you to browse through the tabs before continuing to the next menu screen.



**Figure 16**



- If you wish to log out of FrontView at any time, click **Logout**. (You must close your browser window to securely log out.)
- The status bar right below the navigation bar provides the status of individual devices in the ReadyNAS.
  - The green LED indicates that everything is working normally.
  - The amber LED indicates a warning or a failure condition. (See the *ReadyNAS Duo User Guide* for information on other LED behavior. A link to the *ReadyNAS Duo User Guide* is on the *Resource CD*).
- The menu bar on the left provides the option to switch between Setup Wizard and Advanced Control modes. More menus are available once you enter the Advanced Control Mode.



**Figure 17**

## Setting the Clock

To set your ReadyNAS clock:

1. From the Welcome screen, click **Next**. The **Clock** screen displays. You can set the date, time, and time zone. The clock must be set appropriately to ensure that files maintain their proper timestamp.

**Figure 18**

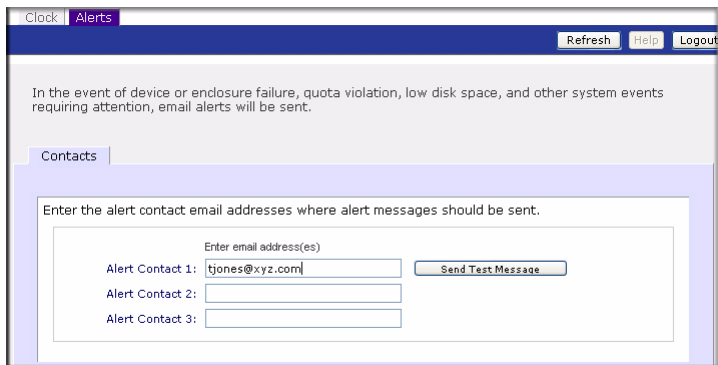
2. The ReadyNAS Duo will automatically attempt to synchronize with a public NTP server when it first boots up. If you want to synchronize the ReadyNAS Duo with a specified local or external NTP server, select the **Synchronize clock with...** radio box in the NTP Option section. Then, specify the NTP servers in the fields provided.
3. Click **Apply** to save your settings.
4. Click **Next** to set up the Alert contacts.

## Configuring Alert Contacts

On the Alerts screen, you can enter your contact name(s) where you want alert messages sent. To enter your Alert contact names:

1. Enter one or more email address that you wish to use as the system alert contact.

Email alerts are the most effective way for the ReadyNAS Duo to notify you of system status, various warnings, and fatal system errors.



**Figure 19**

2. Click **Send Test Message** to verify that alert messaging is working. If you do not receive the test message, check the network gateway and DNS settings.

Some network firewalls prevent unknown message transfer agents (MTAs) (such as those used by the ReadyNAS Duo) from working. If this is the case, you will need to specify a remote SMTP server in Advanced Control mode when you are done with the Setup Wizard. This method is covered in the *ReadyNAS Duo User Guide*.



Various email services may filter out the test message and actual email alerts sent by the ReadyNAS Duo. Verify that the test message arrives at the email destination before continuing.

3. Click **Next** to access the Ethernet Network screen.

# Configuring Your Network

## Ethernet Settings

To configure your Ethernet settings:

1. You can accept the default Ethernet settings if the ReadyNAS Duo is installed in a network environment where DHCP service is used. Otherwise, specify a static address.

If you assign static IP addresses, be aware that the browser will lose connection to the ReadyNAS Duo device after the IP address has been changed. If you encounter this problem, click **Rescan** in RAIDar to rediscover the device and reconnect from there.

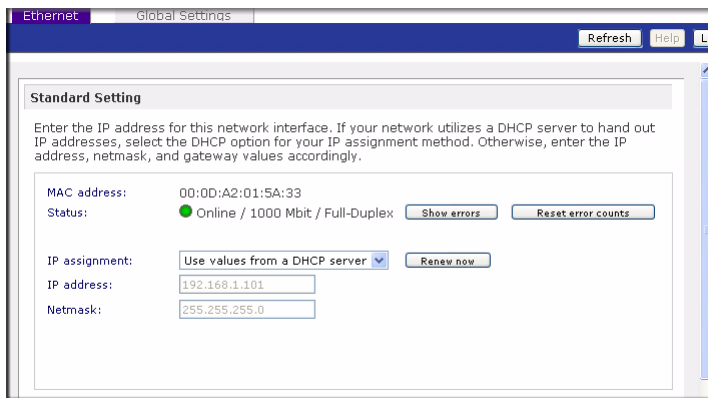


Figure 20

2. Click **Next** to access the Global Settings screen.

## Global Settings

The Global Settings screen allows you to specify the ReadyNAS Duo host name, default gateway and DNS servers.

To set the Global Settings:

1. Enter a hostname that you wish to advertise the ReadyNAS Duo on your network. This hostname can be used in place of the IP address when accessing the ReadyNAS Duo from Windows, or over OS X using SMB. This is also the name that will appear in the RAIDar scan list.

2. If you selected the **DHCP** option in the Ethernet tab, the gateway and domain name server fields will automatically be filled based on the settings from your DHCP server. If you selected the **Static** option, manually enter the information in the field provided

The screenshot shows the 'Global Settings' page for the 'Ethernet' tab. It contains four sections:

- Hostname:** A text input field containing 'nas-01-AD-CC'. Above it is a description: 'The hostname for this device can be used in place of the IP address when accessing this device over CIFS/SMB. This name will also be used in various alerts that this device will send out.'
- Workgroup:** A text input field containing 'NETGEAR'. Above it is the instruction: 'Enter the Windows network workgroup name.'
- Default Gateway:** A text input field containing '192.168.1.1'. Above it is the instruction: 'The default gateway specifies the IP address of the system/router that network requests out of the current subnet will get routed to.'
- DNS Settings:** Four text input fields. The first contains '192.168.1.1'. The others are empty. Above them is the instruction: 'DNS, or Domain Name Service, provides a means to translate hostnames to IP addresses. Enter the DNS IP addresses here.'

Figure 21

3. Click **Apply** to save any changes. Then, click **Next** to configure the ReadyNAS Duo Security.

## Setting Up Your Password

The Admin Password screen allows you to change the default password assigned for the **admin** user. You must change the password before continuing.

To change your password:

1. Enter a new admin password in the field provided; then reenter the password to confirm your selection.

Admin Password

Refresh Help Logout

To change the admin password you will need to additionally specify a password recovery question, the expected answer, and an email address. In case you forget the admin password, you can reset the password by answering the password recovery question correctly and specifying the email address where the new admin password will be sent. **There is no other way to recover a lost password without setting the device back to factory default or reinstalling the firmware.**

New admin password:

Retype admin password:

Password recovery question:

Password recovery answer:

Password recovery email address:

**Figure 22**

2. Specify a password recovery question and the expected answer, along with your email address in the remaining fields. This information will allow you to reset the password on the ReadyNAS Duo in case the password is lost. See the *ReadyNAS Duo User Guide* for details on this process, if required.
3. Click **Apply**. Click **Next** to display the Standard File Protocols screen.

## Adding User Accounts

In order for ReadyNAS Duo users to access the share folders, security on the ReadyNAS Duo requires that you set up a user account for each user.

To set up a user account:

1. Enter a name for the account (a user friendly, recognizable name).
2. Enter the users email address (this is optional) so that the user is informed of any account changes.
3. Enter data in the remaining fields (optional). However, it is recommended that you enter a password for each account.
4. Click **Apply** for you settings to take affect.

In the sample below, we entered two user accounts: Paul and Smithy. You can review and change any data for user accounts by selecting the All tab or by selecting the letter tab that corresponds to the first letter of the user's name.

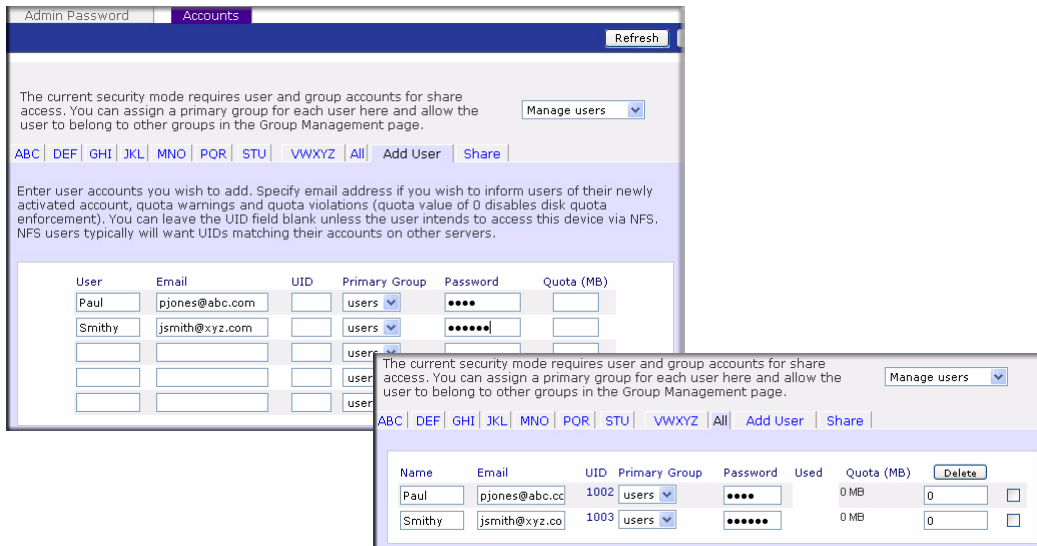


Figure 23

## Setting Up File Sharing Services

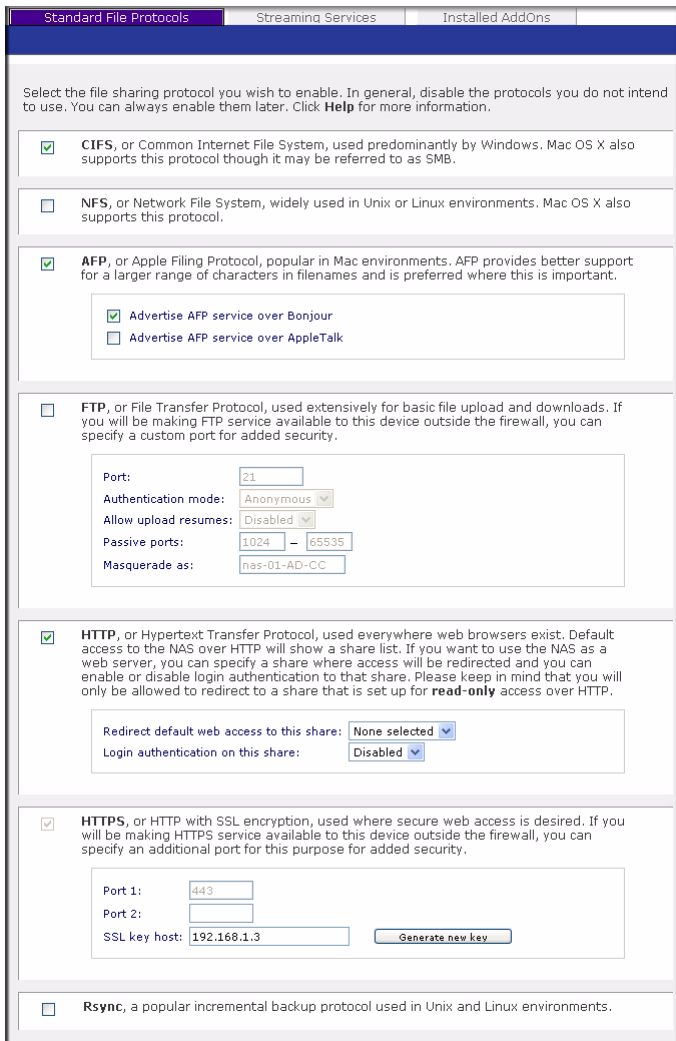
### Standard File Protocols

A share is simply a network folder on the ReadyNAS Duo that clients communicating in various file access protocols from different operating systems can access. To select your file protocols:

1. First, on the Standard File Protocols screen, select the file protocols you wish to enable:
  - CIFS for Windows clients (Macs running OS X can support this as well).
  - NFS for Unix/Linux.
  - AFP for Macs.
  - FTP
  - HTTP/S for browser access.

CIFS, AFP and HTTP are configured by default.

More details on these services are described in the *ReadyNAS Duo User Guide*. You can elect to keep the defaults and revisit this page to fine-tune your services at a later time.



**Figure 24**

2. If you made changes, click **Apply**. Then click **Next** to set up Streaming Services.

## Streaming Services

The ReadyNAS Duo comes with a complete list of streaming media services, allowing you to use a network media player to stream media files directly from the ReadyNAS Duo without going through a PC. By default, no Streaming Services are selected.



To select your Streaming Services:

1. Select the radio box for the desired service.

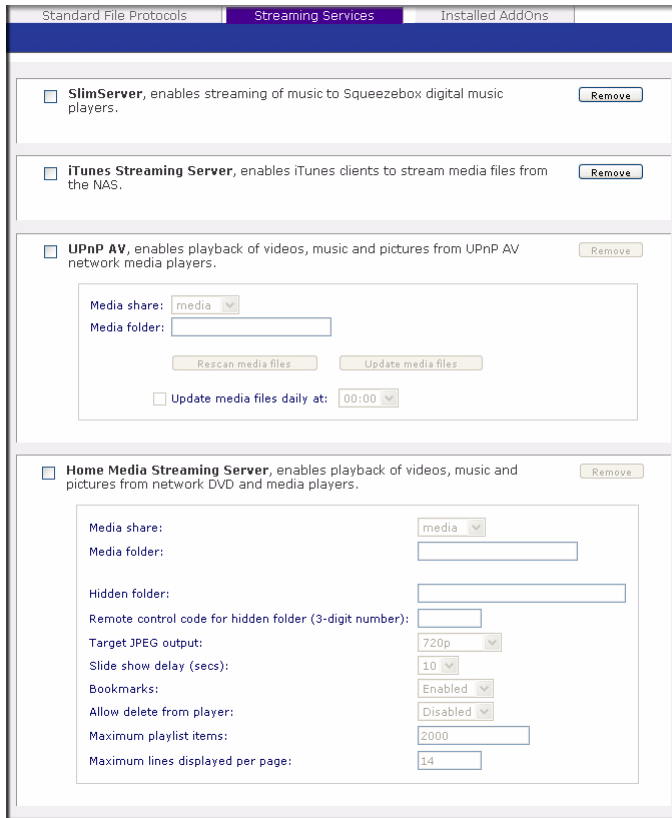


Figure 25

2. Click **Apply** to save your settings. Then, click **Next** to set up Shares.

## Configuring Installed Add-Ons

Two add-ons are available with the ReadyNAS Duo—Bit Torrent and ReadyNAS Photos. Both are disabled by default.

- **Bit Torrent.** The ReadyNAS Duo enables peer-to-peer file sharing and allows the ReadyNAS Duo to queue and index torrent download files. For information on enabling and using the BitTorrent download capability, see the *ReadyNAS Duo User Guide*. A link to the User Guide is on the *Resource CD*.

- ReadyNAS Photos.** The ReadyNAS Duo allows you to share photos with select users on the Internet. You must install ReadyNAS Photos software which is available on the ReadyNAS site. Simply click **Install ReadyNAS Photos** and follow the on-screen prompts. Once you have enabled this feature and downloaded the software, you will be able to share photos located in your Pictures folder. (For more information about installing or using ReadyNAS Photos, see the *ReadyNAS Duo User Guide*. A link to the User Guide is on the *Resource CD*.)

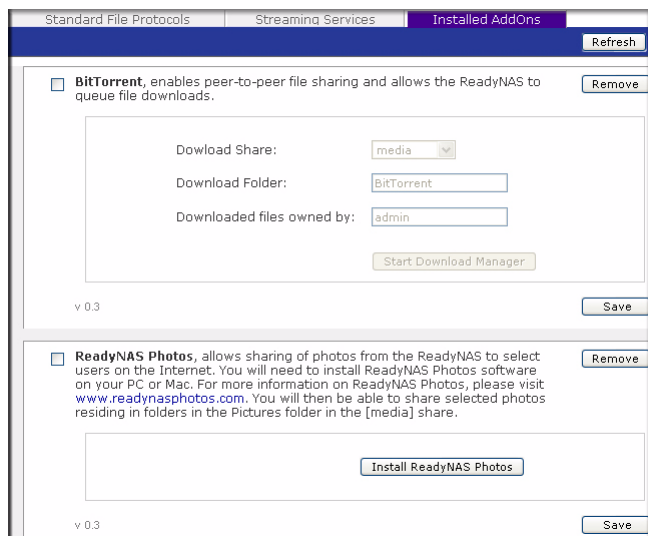
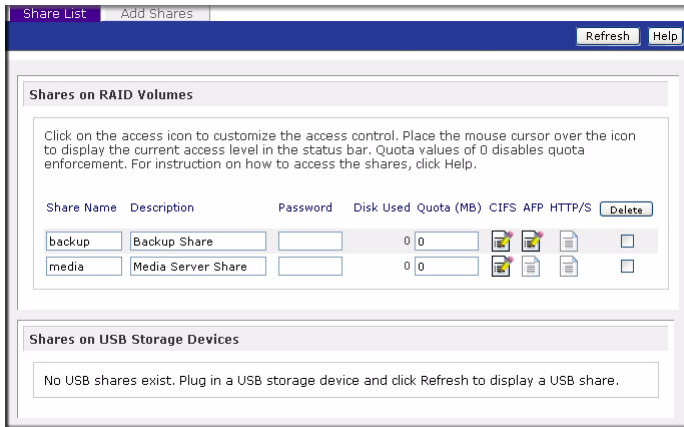


Figure 26

## Setting up Shares (or Folders)

### Share List

The Share List screen lists the share folders currently available on the ReadyNAS Duo. As an example, in the **Shares on RAID Volumes** section, two shares, **backup** and **media**, have been pre-configured for default access.



**Figure 27**

The Shares on the USB Storage Devices section displays the USB Storage shares—if USB storage device are attached.

You can limit share access to specific hosts by customizing access control. When you specify a host in the allow list, no other hosts will be able to access the share using the selected file protocol. Hosts can be listed using their IP address or valid DNS name separated by commas

Different options are available depending on the security mode selected. For example, in **User** or **Domain** security modes, you have the option of restricting share access based on user and group account. For more advanced share access options, see the *ReadyNAS Duo User Guide*.

To customize share access:

1. Click the link adjacent to the share you want to access. A screen similar to the following will display.
2. Select which options you want to change and then click **Apply** to save your settings.
3. Click **Display Share List** to return to the Share List screen.

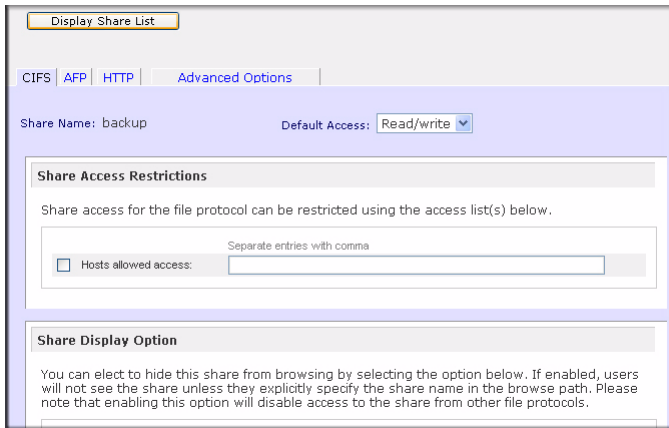


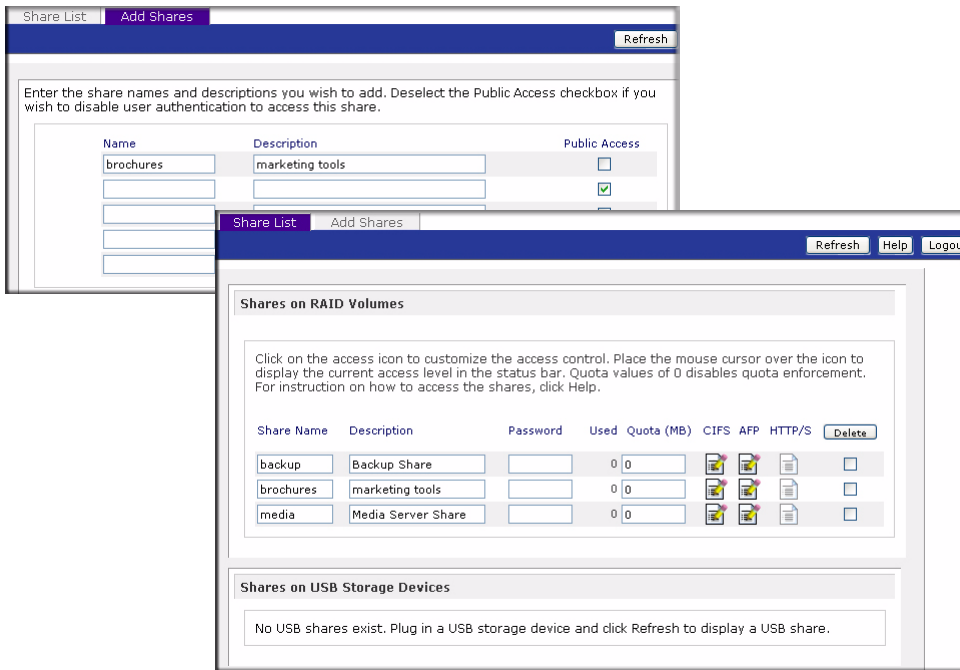
Figure 28

## Adding Shares

You can add additional share folders to suit your needs such as downloads, software, scratch-pad, and so forth. In the following screen, we added an additional share folder, **brochures**. (The Share Name folders are listed alphabetically.)

To add more shares:

1. On the **Add Shares** menu, enter a name for your share folder in the **Name** field. In this example, we added the share “Brochures”. You can enter up to five share names with share descriptions.
2. Allowing public access to this share is selected by default. To disable user authentication, deselect the Public Access checkbox.



**Figure 29**

In the figure above, one share is being added, and Public Access has been disallowed.

3. Click **Apply** to save your changes.
4. Click **Next** to set up Printers.

## Setting Up Printers

If you have not already done so, you can now connect your USB printers to the ReadyNAS Duo.

1. After connecting your USB printers, wait a few seconds, then click **Refresh** to view the USB Printers list. The print share name will automatically reflect the manufacturer and model of your printer.

2. To assign a printer driver to a print share in Windows, click **Browse** in RAIDar, or simply enter `\\hostname` in the Explorer address bar, then double-click the printer icon.

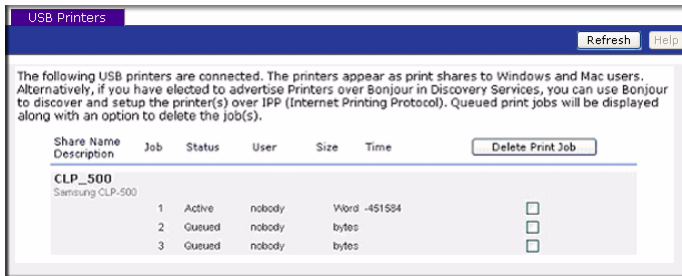


Figure 30

3. Click **Apply** to save your settings. Then, click **Next** to enter the final step in the Setup Wizard.

## Registering Your Product

Register your ReadyNAS Duo product by clicking **Register Product**. Your ReadyNAS Duo product information will be placed in our warranty and support database so we can inform you of the latest software enhancements, bug fixes, and security alerts.

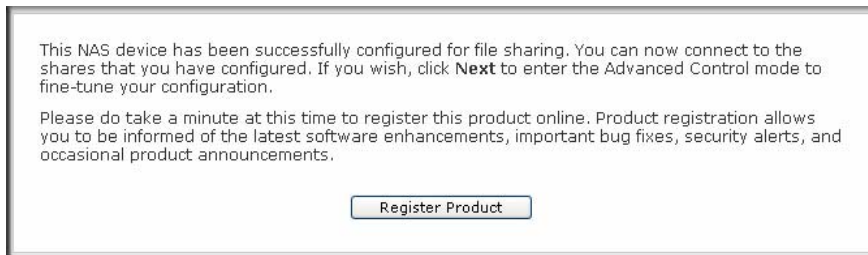
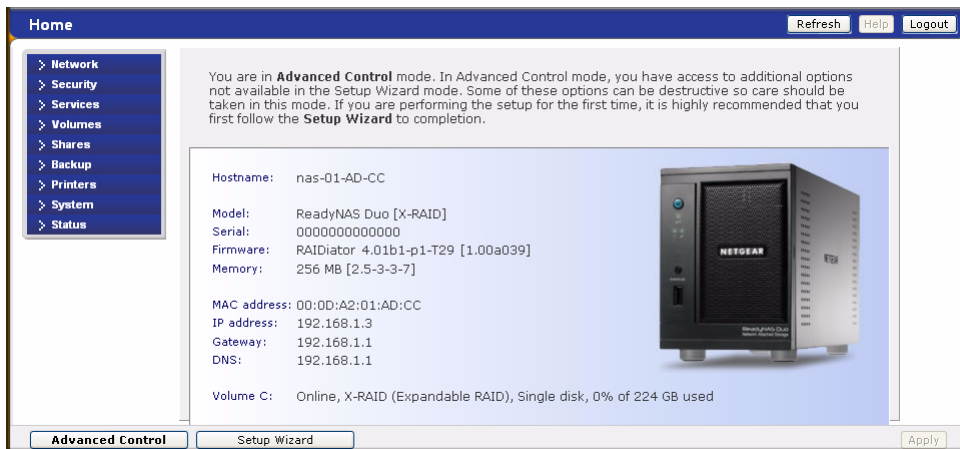


Figure 31

Click **Next** to continue with the Advanced Control mode. The Advance Control options are documented in the *ReadyNAS Duo User Guide* (a link to the *ReadyNAS Duo User Guide* is on your *Resource CD*).



**Figure 32**

You can now start accessing the shares that you just created using Windows Explorer. For instructions on how to access the shares from other client systems, see “Accessing Shares” in the *ReadyNAS Duo User Guide*.

If you choose not to register at this time, you can always go to <http://www.netgear.com/register>, select your ReadyNAS product and register on-line. Then, enter your registration information on the form provided.

